



GMT MONTHLY MEMBERSHIP PROGRESS REPORT

Results as of: 3/31/2017

Multiple District 35

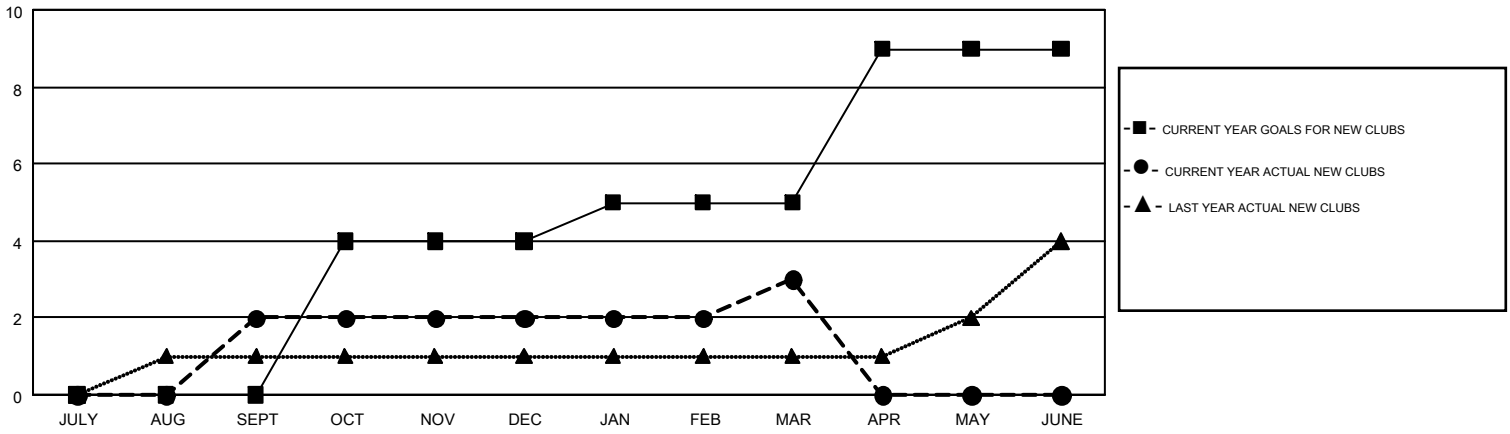
LOCATION: FLORIDA

GMT: HARVEY WHITLEY

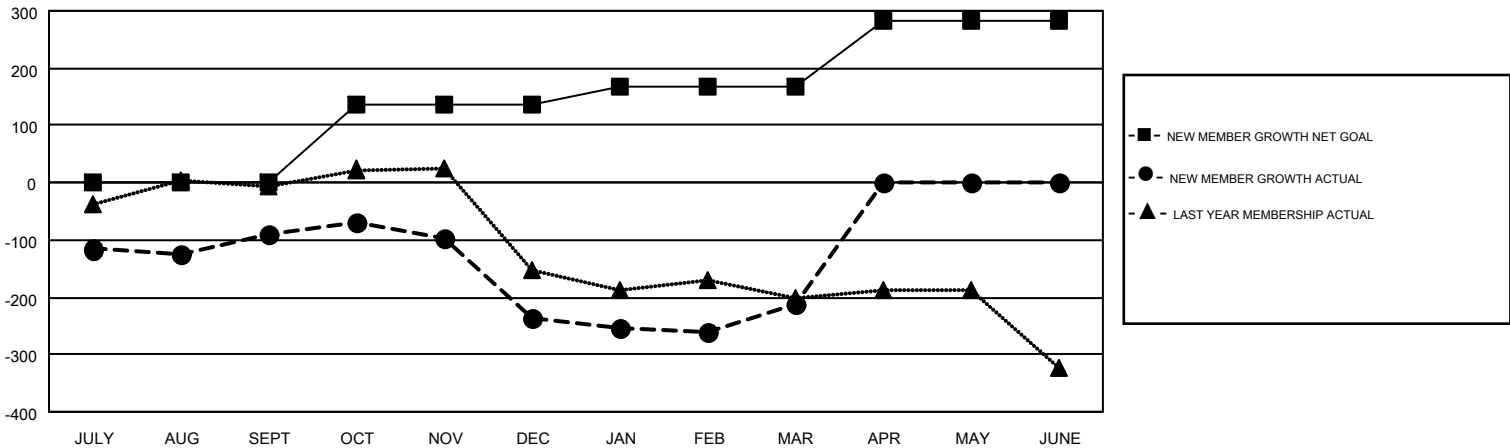
GMT CA 1

Clubs				Members			
RESULTS FOR 2016-2017				RESULTS FOR 2016-2017			
QUARTER	NEW CLUB GOAL	NEW CLUBS	DROPPED CLUBS	QUARTER	NEW MEMBER GROWTH NET GOAL (not reinstated or transfers)	NEW MEMBER GROWTH ACTUAL (not reinstated or transfers)	DROPPED MEMBERS ACTUAL (including transfers)
JULY/AUG/SEPT	0	2	4	JULY/AUG/SEPT	1	243	333
OCT/NOV/DEC	4	0	6	OCT/NOV/DEC	135	145	290
JAN/FEB/MAR	1	1	1	JAN/FEB/MAR	31	223	200
APR/MAY/JUNE	4	0	0	APR/MAY/JUNE	115	0	0

GOALS AND ACTUAL NEW CLUBS CUMULATIVE



GOALS AND ACTUAL MEMBERS CUMULATIVE



DROPPED CLUBS: 11	150 CLUBS OF 236 ADDED 1 OR MORE NEW MEMBERS	<u>GENDER DISTRIBUTION</u>	
<u>DROPPED MEMBERS</u>		MALE	3,122 (56.99%)
DECEASED	52	FEMALE	2,356 (43.01%)
CLUB CANCELLED	58	TOTAL FAMILY UNIT MEMBERS	1,319
OTHER	712	FAMILY MEMBERS PAYING HALF DUES	680
TOTAL	822		

[CLICK HERE FOR CUMULATIVE MEMBERSHIP DATA](#)